



# sd221

**Square Footage**      **Stories**

2,650      2

**Bedrooms**      **Baths**

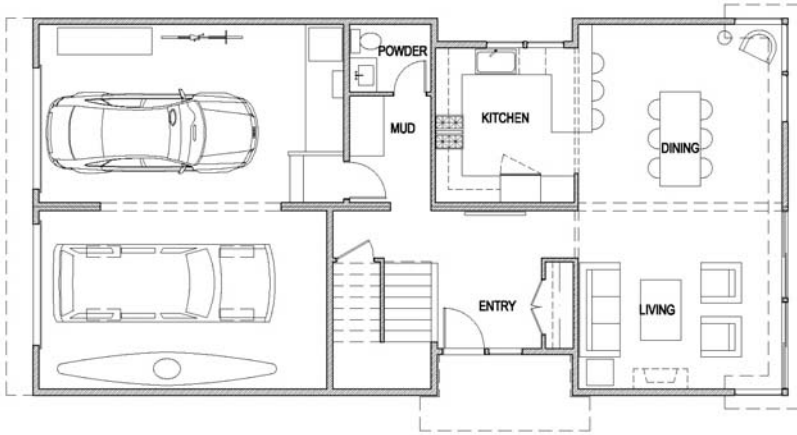
3      2.5

**Footprint:** 58' x 28'

**Price Range:** \$404,000 - \$495,000

## OVERVIEW

The double height ceiling in the great room makes this a spectacular space that is further enhanced by a crow's-nest loft looking down from the upper floor. This three bedroom, 2 ½ bath, with a two car attached garage, is delivered on a compact footprint making it ideal for difficult sites.

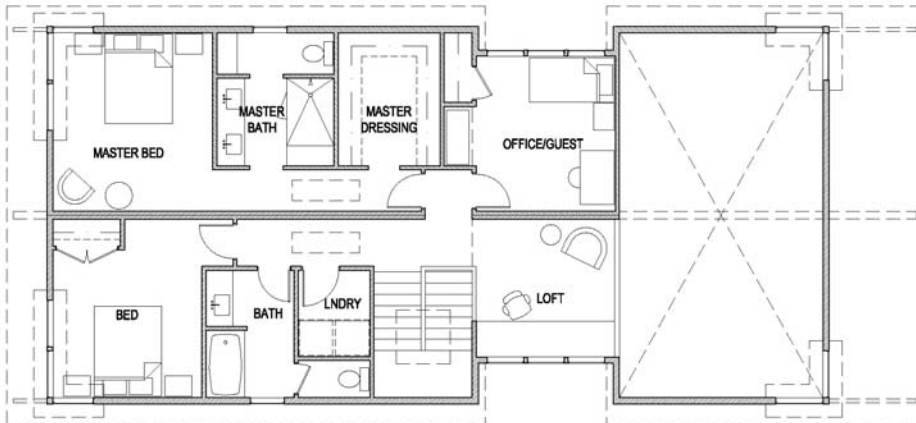


## INCLUDED

Included with each home is your choice of 3 interior & exterior spec packages:

- 1.) **Fundamental** Stylish, fun, & low-maintenance..
- 2.) **Natural** Simple, clean, refined.
- 3.) **Modern** Ultra-hip & contemporary.

Visit our website for more details, and a downloadable Spec Package & Options Sheet.



\*model sd121 shown